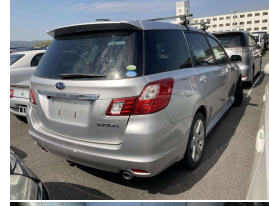


2010 Subaru EXIGA 2.5I-S 4WD



VEHICLE INFORMATION

Cash Price

Includes GST

\$12,990

+ on-road-costs of \$295

Finance this vehicle
from only

\$72.27

per week*

Total Amount Payable

\$18,791.09

finance
NOW



Gain peace of mind
with Mechanical
Breakdown Insurance.
Ask us how.

Body

-

Odometer

119,000 km

Engine

2500 cc, Internal Combustion

Fuel Type

Petrol

Transmission

Auto, Front Wheel

Wheels

-

VIN

-

Reg No.

-

Ext Colour

Silver

History

-

Seats

-

Interior

-

Audio

CD Player

Stock ID

2392

Exterior Features

- » Central locking
- » Electric Mirrors (Retractable)

Interior Features

- » Air Conditioning
- » Central Locking
- » Climate Control
- » Driver airbag
- » Factory CD Player/ FM/AM
- » Passenger airbag

Mechanical Features

- » ABS brakes
- » Power steering



Xposure Motors, Phone 0277 325 325, Email sales@xposuremotors.co.nz

38 East Tamaki Road, Papatoetoe, Auckland 2025, New Zealand

www.xposuremotors.co.nz

* Finance calculation based on a 60 month term, no deposit and with an example annual fixed interest rate of 12.95%. Actual interest rate may be higher or lower. Includes an establishment fee of \$495.00. Full term total amount payable of \$18,791.09. Estimate only, not an offer of finance. Terms, conditions and lending criteria apply.