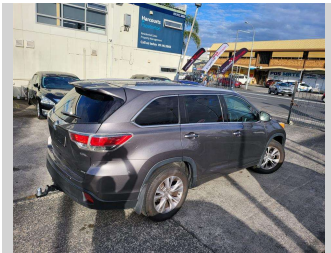
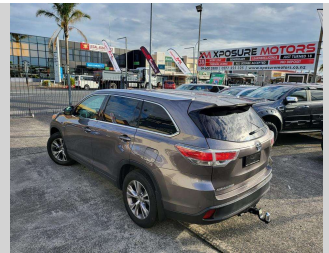


# 2016 Toyota Highlander 7 seat 4WD



Purchase Price

\$28,990

Includes GST

Excludes on-road costs of \$595

Indicative repayments

\$157.76 per week\*

Based on a 60 month term & no deposit.

Total repayments (260) = \$41,018.57

finance

NOW

Gain peace of mind with Mechanical Breakdown Insurance. Ask us how.

ASSURANT®

Top features

» ABS brakes

» Air Conditioning

» Alloy wheels

» CD Player

» Central locking

» Central Locking

» Climate Control

» Driver airbag

» Electric Mirrors (Retr...

» Factory CD Player/ FM/...

» Passenger airbag

» Power steering

Body Style

5 door, SUV

Odometer

223,230 km

Engine

3456 cc, Internal Combustion

Fuel Type

Petrol

Transmission

Auto, 4WD

Wheels

-

VIN

5TDBK3FH90S223989

Interior

Black

Safety

4 star safety rating

Based on 2025 UCSR rating for 13-20 models

Reg No.

JPP453

Ext Colour

Grey

History

-

Seats

7 seats

CO2 Emissions

★☆☆☆☆

283 grams/km

Energy Economy

★☆☆☆☆

Annual fuel cost of \$4,630

11.8L per 100km

Cost per year is an estimate based on petrol price of \$2.80 per litre and an average distance of 14000 km. Emissions and Energy Economy figures standardised to 3P WLTP.

Stock ID: 4109



Xposure Motors | Phone 0277 325 325 | Email sales@xposuremotors.co.nz  
38 East Tamaki Road, Papatoetoe, Auckland 2025, New Zealand  
www.xposuremotors.co.nz

\* Xposure Motors is not a lender nor a financial adviser. Any amounts displayed should not be seen as an offer of finance or taken as financial advice. The interest rate, fees and loan term used in this calculation may not actually represent those available from lenders. Actual interest rates, fees and loan terms will vary per lender and are typically based on an assessment of your credit risk and responsible lending criteria. Any repayment amounts displayed are indicative only and have been calculated using several other indicative inputs. The interest rate used in this calculation is an arbitrary 12.95%, however exact interest rates vary per lender. The term of the loan used in this calculation is 60 months. Exact terms available vary per lender although options typically include 6, 12, 18, 24, 36, 48 and 60 months. This calculation also includes a typical mandatory fee charged by lenders. This is a one-off establishment fee of \$495.00. Typically, this fee can be paid upfront or, as in this calculation, be capitalised over the contract term, ie. included in the loan amount. This fee can vary per lender and other non-mandatory fees and charges may also apply. The total amount of repayments has been calculated by multiplying 260 weekly repayments (based on a 60 month term) by the weekly repayment amount of \$157.76 which equals \$41,018.57. This calculator does not consider any of your own personal circumstances and we strongly suggest you seek budgeting advice prior to committing to any loan contract. Responsible lending criteria and lender terms and conditions will likely apply to any finalised loan contract. Proof of security and/or vehicle insurance may also be required before proceeding.